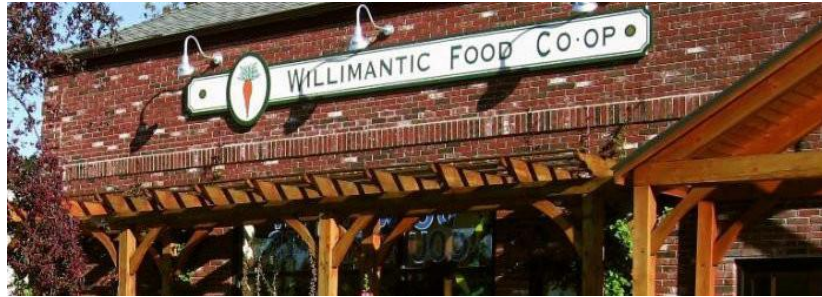


Part Time Employment Opportunity!



PRODUCE DEPARTMENT TEAM MEMBER

Part-time position

Weekend and Evening Availability Required

Starting wage: \$12.00/hour

Are you passionate about food and enjoy working with your hands? We are looking for an energetic, reliable person to join the produce department. As part of the produce team you will be responsible for unloading pallets, stocking shelves and helping set up beautiful, bountiful displays of local and organic produce, while providing exceptional customer service to all our shoppers.

To apply, please submit a job application at the Co-op, and specify on the application that you are applying for the Produce position. Job applications can be obtained at the front end of the Co-op or at willimanticfood.coop.

After submitting your application, please wait to be contacted by a hiring manager. We consider all applications, keep them on file for a year, and review all previous applications each time we have an opening. We are not able to call or interview every applicant. If you are not contacted, please feel free to call or come in and update your application when there is a new job post.



The Willimantic Food Co-op is committed to equal opportunity in its employment practices. We do not discriminate on the basis of race, color, sex, age, religious or political beliefs, national origin, sexual orientation, marital or parental status, disability, genetic information, or veteran status. The Willimantic Food Co-op is an "at-will" employer.